



I-CUBE**X**

Sensors & Interfaces

Software

Support

GH-719 Microwave Sensor Module

Introduction

GH-719 microwave sensor module is non-contact displacement probe-type modules, RFI ability, independent of temperature, humidity, light, air, dust impacts can be installed in a certain thickness of the plastic, glass, wood and other non-metallic shell which facilitate their application to control a variety of products or equipment above.

Second, the adjustments of the circuit board:A 16-level sensitivity adjustment: the circuit board with 4 0 1 2 3 marked the connection point.

1: Short circuit in accordance with the following four connections, adjustable 16-level sensitivity, so that in the 0.3-10 m sensing distance adjustable.

2:4 a connection point break, the nearest sensor, at 0.5 meters.B 4 trigger modes to adjust: the circuit board there are two connections marked with 45 points.

Touch-type trigger can not be repeated 1:00:

Detect moving objects, high signal output 3 seconds after the stop, delay 2 seconds and then test to detect moving objects further out than 2 seconds, followed by cycling. Until less than a moving object detection, high signal output to stop.

2:01 repeatable trigger touch-type, delay time of 2 seconds:

Detect moving objects, high signal output 2 seconds, 2 seconds of time, the module frequency of 30 times per second, not live testing, to detect if an object moving again, time to delay 2 seconds, Until less than a moving object detection,

High signal delay 2 seconds after the stop.3:10 repeatable trigger touch-type, delay time of 10 seconds:

Detect moving objects, high signal output of 10 seconds, 10 seconds time, the module frequency of 30 times per second

Not live testing, to detect if an object moving again, time to delay 10 seconds, until less than a moving object detection,

High signal delay of 10 seconds after the stop.4:10 repeatable trigger touch-type, delay time of 20 seconds:

Detect moving objects, the output 20 seconds kind of high signal within 20 seconds, the module frequency of 30 times per second

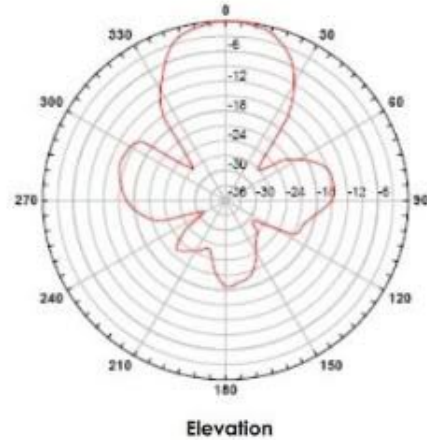
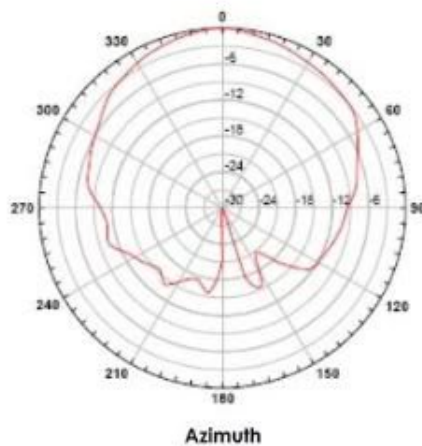
Note:

Sensitivity and trigger mode selection, the microcontroller needs power reset to implement the new options.

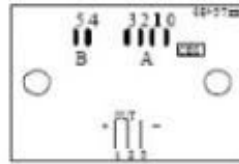
Three main technical parameters:

1 center frequency: 10.525 GHz 2 Operating voltage: DC6V \pm 20V3 Quiescent Current: 6mA4 high / low output level: 5V/0V5 3 dB antenna - Azimuth 80 °6 3dBantenna-40°pitch7 0.3-10 meter sensing distance adjustable 16 8 trigger: 4 options9 Ambient temperature: -30-70 degrees10 Form Factor: 45 * 37 * 18mm

Microwave Sensor Range



Layout



External Dimension: 45x37x18mm

A Ports: "3 2 1 0"

16 grades sensitivity adjustment:

0000; 0001; 0010; 0011;

0100; 0101; 0110; 0111;

1000; 1001; 1010; 1011;

1100; 1101; 1110; 1111.

B Ports: "5 4"

4 grades optional trigger mode:

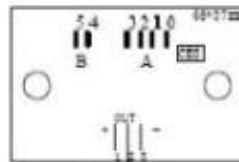
"00": Non-replayable trigger mode;

"01": 2-second delay Replayable trigger mode;

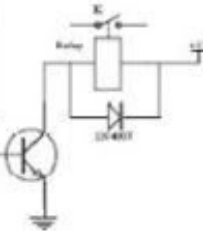
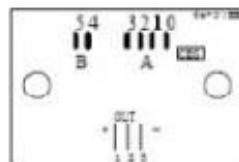
"10": 10-second delay Replayable trigger mode;

"11": 30-second delay Replayable trigger mode.

Level Signal



DC Loading



AC Loading

