

Getting started with the Wi-microDig on Mac OS X (Intel/PPC)

This document will walk you through the procedure of connecting to your Wi-microDig with the Editor application.

For this walkthrough, you will need:

- Wi-microDig digitizer
- 9 Volt Battery
- Turn sensor (or any other sensor)

Installing the editor application

You can find the latest editor here:

http://infusionsystems.com/catalog/info_pages.php/pages_id/2

Open the .sit file, and move the Editor folder to your Applications folder.

Connecting to the Wi-microDig with the Editor

The editor allows you to configure the Wi-microDig such that within the Wi-microDig, sensor data is processed and mapped to MIDI messages. 3rd-party applications can then use this processed sensor data.

You'll need to use the editor at least once to configure your Wi-microDig, for instance to turn on sensor inputs 1-3, set the sampling interval or assign a MIDI message type to each sensor. After that the Wi-microDig retains these settings — even after powering off — until you next change them in the editor.

1. Connect a 9 Volt battery to the Wi-microDig to power it on, and make sure that Bluetooth is enabled. (System Preferences → Bluetooth)

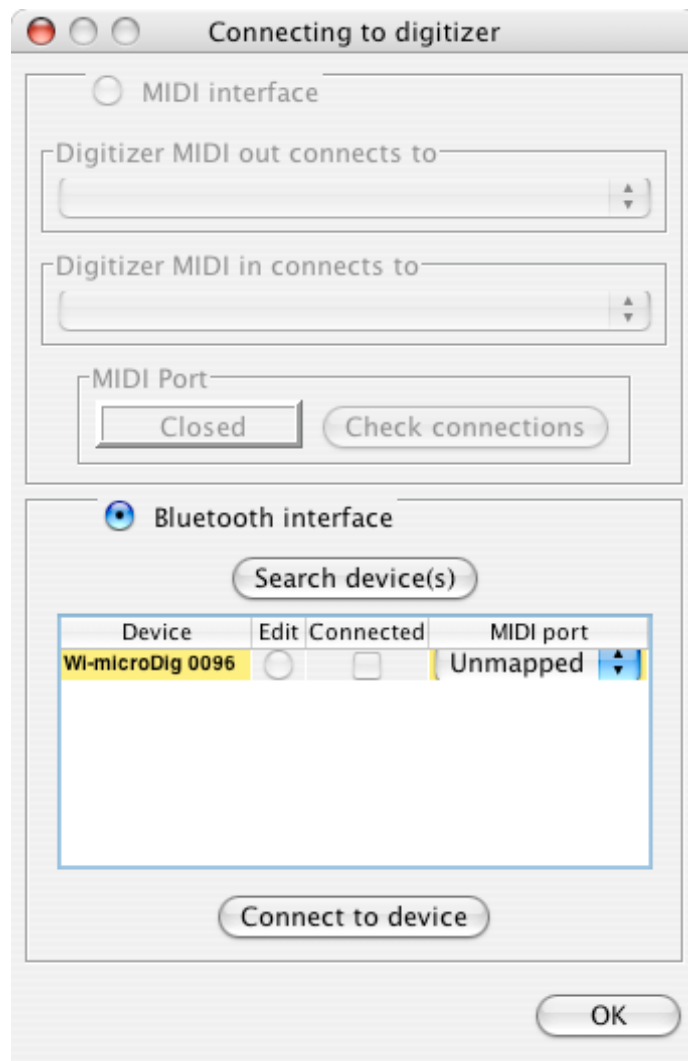
2. Connect the Turn sensor (or any other sensor) to input #1 of the Wi-microDig.

3. Launch the I-CubeX editor.

If it is the first time connecting to the Wi-microDig, you will see the Connections dialog.

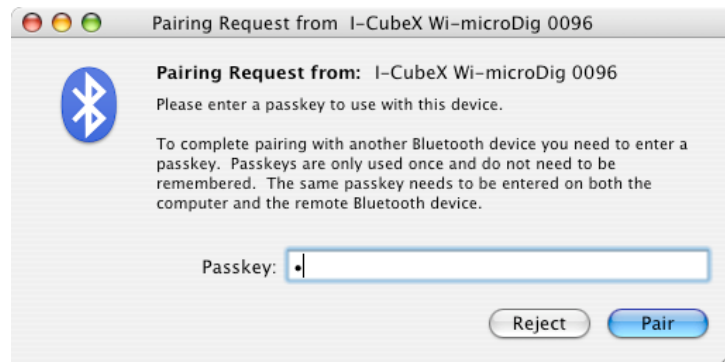
4. Click on “Search Devices” in the Connections dialog.

The Wi-microDig and its serial number should appear in the table. If it doesn't appear, check to see that Bluetooth is enabled, and make sure your battery has enough charge to power the device.

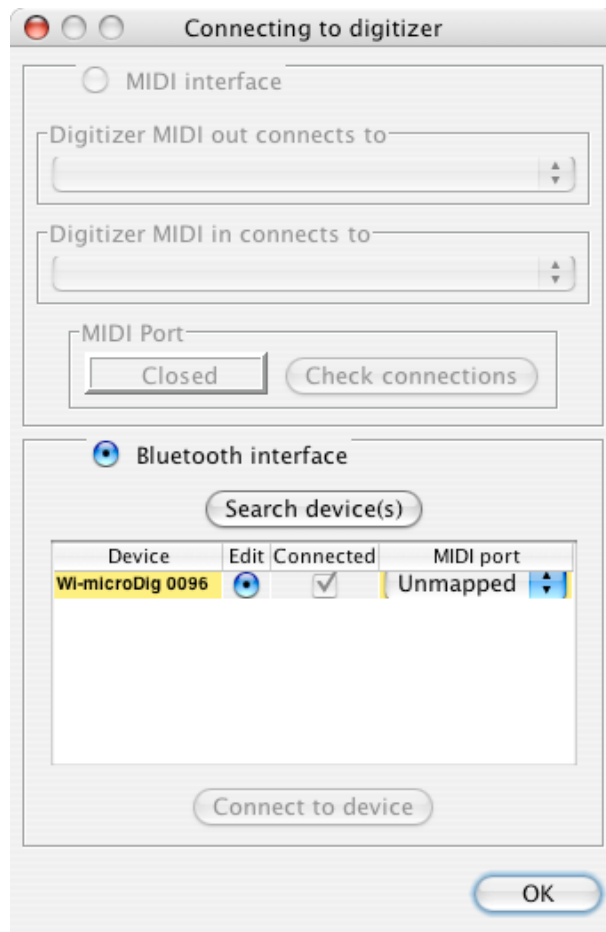


5. Select the entry in the table and click "Connect to device"

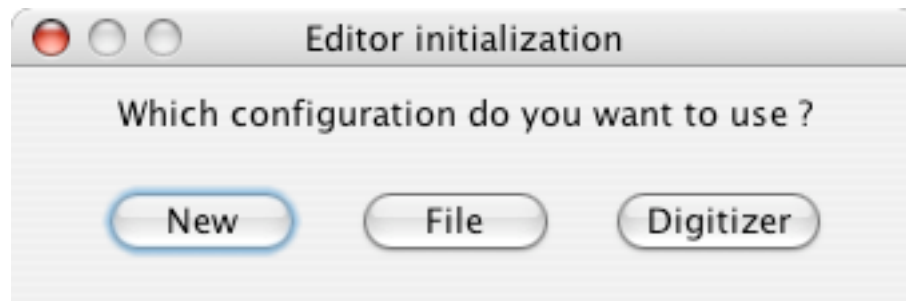
You will be asked to enter a passkey to connect. The passkey is: 1



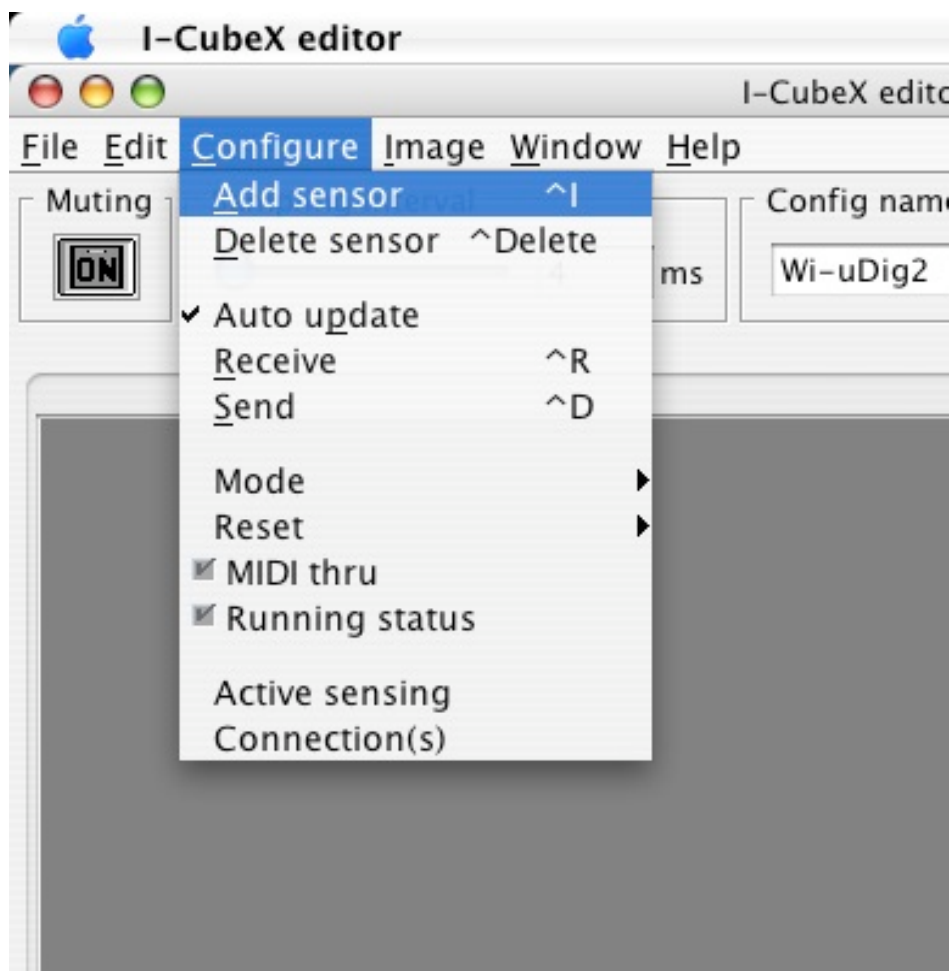
6. Wait until the "Connected" check box next to the table entry is checked and click "OK".



7. Select "New" from the configuration selection window.



8. Add a sensor window. (Configure → Add Sensor)



9. Click "On" in the sensor window.

10. Rotate the Turn sensor knob and verify that the green bar in the bottom of the sensor window moves between values 0 and 127.

